

# ABOUT OUR PROGRAM

Individuals with schizophrenia often face triple jeopardy: a devastating mental illness, co-morbid medical problems, and co-occurring substance use. In addition, they are disadvantaged in their employment, educational attainment, interpersonal relationships, and other social determinations of health. UMass Mind Clinical and Research Program aims to develop innovative intervention strategies to promote the whole person health. Through our research, clinical services, and community initiatives, we strive to improve the quality of life and health equity in this patient population.



## WEBSITE

[www.umassmed.edu/umass-mind](http://www.umassmed.edu/umass-mind)



## SOCIAL MEDIA

Instagram: @umassmind  
Facebook: @Umassmind

Docket #: STUDY00001339

# INTERESTED? CONTACT US!



+1 508-856-MIND (6463)



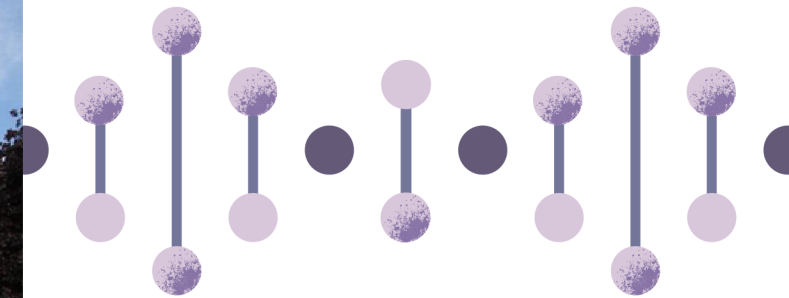
Mind@umassmed.edu



All study visits happen at:  
26 Queen Street, Worcester  
MA 01610



## EFFECTS OF ADJUNCTIVE LUMATEPERONE TREATMENT IN CLOZAPINE-TREATED INDIVIDUALS WITH SCHIZOPHRENIA



**UMass Mind**  
Clinical and Research Program

Beautiful Mind | Productive Life

Email: [MIND@umassmed.edu](mailto:MIND@umassmed.edu)  
Phone: (508) 856-MIND (6463)



## ABOUT THE STUDY

The purpose of this study is to determine whether lumateperone (CAPLYTA®) might improve physical health in clozapine (CLOZARIL®)-treated individuals with schizophrenia.

- You will receive either lumateperone or a placebo pill through random assignment.
- You will be compensated for your time.

## WHAT THE STUDY INVOLVES

- You will receive the study drug for 12 weeks and meet with the study team approximately 8 times.
- You will answer questions about the mental and physical symptoms you might be experiencing.
- You will have body measurements taken, such as weight and body fat.
- You will also have some blood tests.

Taking part in this research is voluntary and completely up to you. You are free to say no or leave the research at any time.



## WHO CAN BE IN THE STUDY?

We are looking for individuals who are:

- 18-65 years old
- English speaking
- Diagnosed with schizophrenia or schizoaffective disorder
- On clozapine (CLOZARIL®) treatment