

Educational Policy Committee (T.H. Chan School of Medicine)

Annual Update to Faculty Council

Erin McMaster, MD

Associate Professor of Pediatrics

Chair, Educational Policy Committee (SOM)



March 2025

Objectives

- 1) Describe the function and structure of the Educational Policy Committee
- 2) Review the work of the EPC for AY 2024/25
- 3) Discuss plans and goals for AY 2025/26

Function of the EPC

“Legislative Branch” for Curriculum & Educational Policy Governance for the program leading to the M.D. degree

Reports directly to the Dean

Central role in curriculum review, curriculum development, educational innovation, and accreditation

Structure of the EPC

- **EPC Leadership Team:**
 - **Chair:** Erin McMaster, MD (Pediatrics)
 - **Vice-Chair:** Lela Giannaris, PhD (Radiology)
 - **Administrator:** Samantha Michaud
- **Voting seats include:**
 - 1 faculty representative from each basic science and clinical department
 - Faculty representatives from Baystate (x3), Lahey (x3), Faculty-at-large (x2), Alumni Association (x1), and Affiliates Sites
 - 4 Student representatives
 - 2 from the Worcester campus
 - 1 from each regional campus (x2)
- **Non-voting seats include:**
 - Dean, Senior Associate Dean, Associate Deans, Assistant Deans

EPC Voting Membership AY 2024/25

Monthly Meetings
1st Monday
12:30-1:30pm

Open to the UMass
Chan Community



	Department	Name
Basic Science	Biochemistry & Molecular Pharmacology	William Royer, PhD
	Microbiology and Physiological Systems	Rachel Gerstein, PhD
	Molecular, Cell, and Cancer Biology	William Strohsnitter, PhD
	<i>Neurobiology</i>	<i>Vacant</i>
	Population and Quantitative Health Sciences	Eric Mick, PhD
	<i>RNA Therapeutics Institute</i>	<i>Vacant</i>
	<i>Systems Biology</i>	<i>Vacant</i>
Clinical Science	Anesthesiology and Perioperative Medicine	Mark Dershwitz, MD
	<i>Dermatology</i>	<i>Vacant</i>
	Emergency Medicine	Jennifer Carey, MD
	Family Medicine & Community Health	Mike Ennis, MD
	Medicine	Pang Yen Fan, MD
	<i>Neurological Surgery</i>	<i>Vacant</i>
	<i>Neurology</i>	<i>Vacant</i>
	Obstetrics and Gynecology	Dhivya Kannabiran, MD
	<i>Ophthalmology & Visual Sciences</i>	<i>Vacant</i>
	Orthopedics & Physical Rehabilitation	Marci Jones, MD
	<i>Otolaryngology</i>	<i>Vacant</i>
	Pathology	Thomas Smith, MD
	Pediatrics	Kerri Gosselin, MD
	Psychiatry	Isha Jalnapurkar, MD
	<i>Radiation Oncology</i>	<i>Vacant</i>
	Radiology	Maria Barile, MD
	Radiology/Translational Anatomy	Maged Soliman, MD
Surgery	James Carroll, MD	
Urology	Jennifer Yates, MD	

EPC Voting Membership AY 2024/25

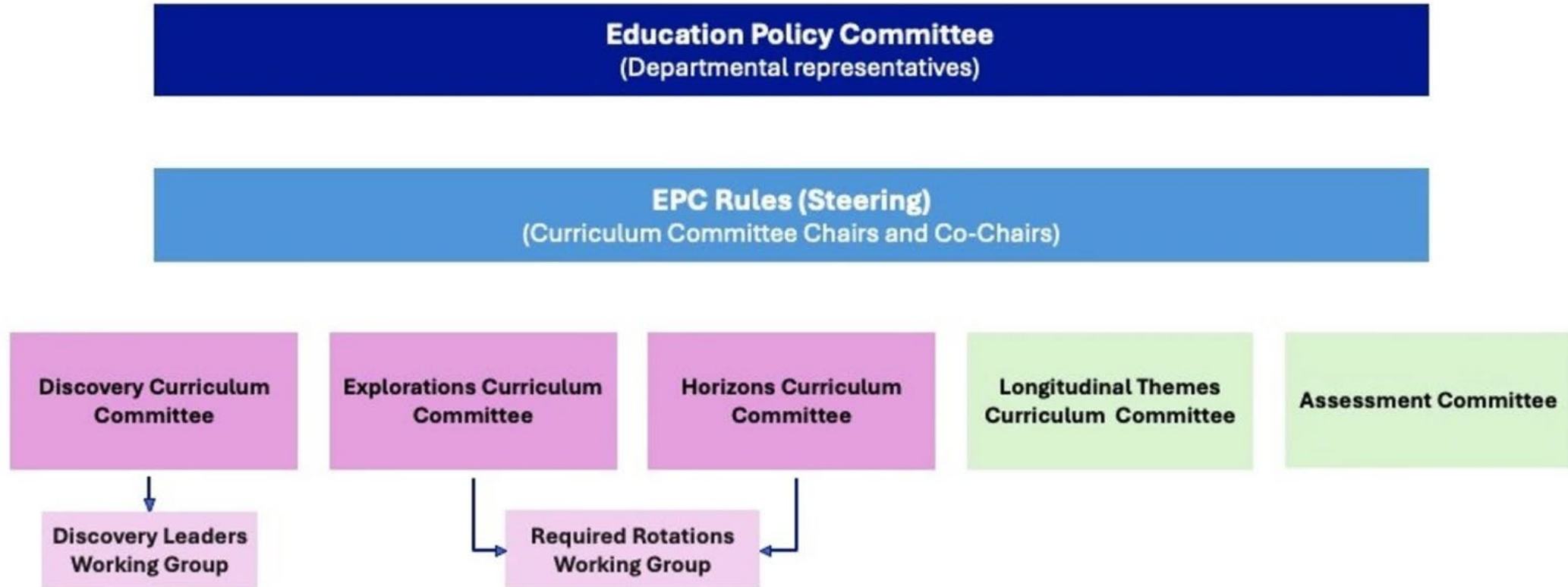
Monthly Meetings
1st Monday
12:30-1:30pm

Open to the UMass
Chan Community



	Group	Name
Students	Medical Student - WOR	Zahin Ahmed
	Medical Student - WOR	Tyler Long
	Medical Student - PURCH	Yasmeed Saeed
	Medical Student - LEAD @ Lahey	Robert Williams
	Alternate (non-voting) Medical Student	Kashika Bharol (PURCH)
Faculty-at-Large & Alumni Council	Faculty-at-Large	David Hatem, MD
	Faculty-at-Large	Susan Gagliardi, PhD
	Alumni Council	Nancy Skehan, MD
Regional Campuses	UMass Chan - Baystate	Liza Smith, MD
	UMass Chan - Baystate	Diane Robillard, MD
	UMass Chan - Baystate	Raquel Belforti, MD
	UMass Chan - Lahey	Maria DeOliveira, EdD
	UMass Chan - Lahey	Inbar McCarthy, MD
	UMass Chan - Lahey	Jennifer Rehm, MD

The EPC has 6 curriculum subcommittees + 2 working groups



Subcommittees have 2 faculty co-chairs and 1 student co-vice chair (resident co-vice chair for Assessment committee)

No students on working groups

EPC and Subcommittee Work AY2024-25

Curriculum Oversight - 1

Course / Clerkship / Theme / Subcommittee Reporting & Presentations

- Revised Phase-based Course and Clerkship reports and presentations
 - Process for CQI at course level
 - Tracking of key LCME metrics
 - Highlighting Student Satisfaction Survey areas of opportunity
 - Integration of Longitudinal threads
- Developed Longitudinal-based reports and presentations
 - Process for CQI at longitudinal theme or assessment area
- Revised Subcommittee reports tracking same metrics
 - Process for curricular review across all four years

Curriculum Oversight - 2

CQI Efforts for Underperforming Courses / Longitudinal Themes

- Tracking and support for courses whose metrics demonstrate need for additional improvement
- MS1 Discovery Phase courses:
 - DIS 102 - Principles 2 - Foundations of Disease Prevention and Treatment (P2-FDPT)
 - DIS 106 - Gastrointestinal System (GI)
- Pathways - Vista Longitudinal Course
- Conducted student focus groups

Curriculum Oversight - 3

VISTA Curriculum Approval

- Approval of Horizons phase of Vista Curriculum
 - Final phase of medical program, replacing the Advanced Studies (MS4 curriculum)
 - Includes Sub-internships
 - Transitions to Residency
 - Emergency/Critical Clinical Problem Solver
 - Intersessions

Enhanced student communication

- Meetings with curriculum committee student co-vice chairs and student representatives
- Working on increased messaging to study body on committee work

Policy Work

- Step-1 Readiness Policy
- Policy for Rotations/Electives with Family Members
- Explorations Phase
 - Deferral Policy
 - Grade Appeal Policy
- Horizons Phase
 - Elective Requirements
 - Absence Policy
 - Exemption from Synchronous Completion of Intersession Policy



Presentations to EPC

- Office of Educational Affairs Annual Report
- Graduate Questionnaire Results
- Trended Student Feedback report
- Standards of Respect report
- Office of Admissions
- Accelerated MD program
- Center for Academic Achievement



EPC Sharepoint site updates




T.H. Chan School of Medicine Educational Policy Committee (EPC)

Reporting to the Dean, the EPC is a primary governing body of the T.H. Chan School of Medicine and has the authority to determine policy for medical school education. The EPC is responsible for planning, implementing, supervising, evaluating, and continuously revising a coherent and comprehensive program of general medical education for physicians.

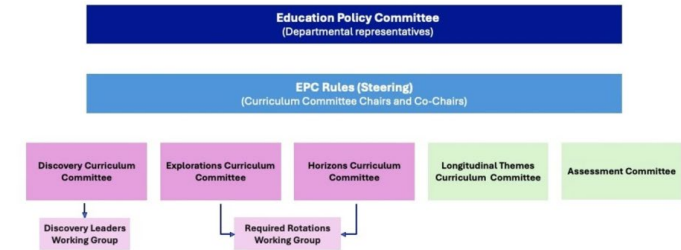
The standing EPC Subcommittees are charged by the EPC to address issues including but not limited to: Curriculum; Academic Calendar and Daily Schedules; Student Feedback and Needs Assessment; Guidelines, Processes and Relevant Policies; Student Performance Assessment; Institutional Policies and Announcements; and Strategic Planning.

The EPC meets monthly, generally the first Monday of the month except when there is a Monday holiday, from 12:30-1:30 pm. The meetings are open to all interested faculty. Please contact [Samantha Michaud](#) with any questions.

EPC Leadership

- 
McMaster, Erin (UMMHC)
 Physician (Dual)
- 
Giannaris, Eustathia Lela
 Assoc Professor
- 
Michaud, Samantha
 Coord, Admin II - NEP

- [Bylaws](#)
- [EPC Meeting Minutes](#)
- [Change Management Protocol](#)
- [EPC Meeting Schedule 24-25](#)
- [Form & Report Templates](#)
- [EPC Membership List](#)
- [Policies & Procedures](#)
- [EPC Year at a Glance](#)



Vista Curriculum Subcommittees



Longitudinal Themes Curriculum Committee




Assessment Curriculum Committee



Discovery Curriculum Committee



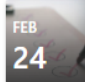
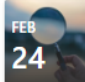
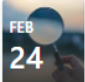
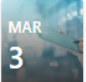


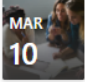
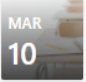


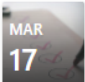
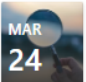
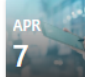

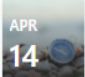

Exploration Curriculum Committee



Horizons Curriculum Committee

Committee Meeting Schedules 2024-2025

+ Add event

 FEB 24	EPC Rules Meeting Mon, Feb 24, 12:30 PM	 FEB 24	DCC Meeting Mon, Feb 24, 4:00 PM	 FEB 24	DCWG Meeting Mon, Feb 24, 5:00 PM	 MAR 3	EPC Meeting Mon, Mar 3, 12:30 PM
 MAR 3	LTCC Meeting Mon, Mar 3, 1:30 PM	 MAR 10	ECC Meeting Mon, Mar 10, 12:00 PM	 MAR 10	RRWG Meeting Mon, Mar 10, 1:00 PM	 MAR 10	ACC Meeting Mon, Mar 10, 4:00 PM
 MAR 12	ASCC Meeting Wed, Mar 12, 12:00 PM	 MAR 12	ASCC Meeting Wed, Mar 12, 12:00 PM	 MAR 17	EPC Rules Meeting Mon, Mar 17, 12:30 PM	 MAR 24	DCWG Meeting Mon, Mar 24, 5:00 PM
 APR 7	EPC Meeting Mon, Apr 7, 12:30 PM	 APR 7	LTCC Meeting Mon, Apr 7, 1:30 PM	 APR 14	ECC Meeting Mon, Apr 14, 12:00 PM	 APR 14	RRWG Meeting Mon, Apr 14, 1:00 PM

Faculty and Student Engagement Workshops

- Getting Engaged: Techniques for Enhancing Attention and Interaction in Education
- Clinical Preceptor Potpourri: Rapid Fire Faculty Development Topics
- Innovating Together: A Workshop to Strengthen the Medicine and Human Experience Curriculum
- Paging Dr. Feedback: Building Essential Communication and Leadership Skills for Clerkships and Beyond (*student-led*)
- Beyond the Classroom: Supporting Regional Track Students in PURCH and LEAD@Lahey (*student-led*)

*Annual School of
Medicine Educational
Retreat
January 10, 2025*

EPC Plans and Goals for AY 2025-26

Annual Reports

- Office of Educational Affairs
- Student Satisfaction Survey
 - Student Focus Groups
- Standards of Respect
- Annual course / clerkship / theme reports to respective subcommittee
- EPC Subcommittees

Presentations

- Coaching program
- Learning Community mentors
- Admissions
- Student Life

EPC Plans and Goals for AY 2025-26

Faculty Development

- School of Medicine Educational Retreat
 - Fall 2025

Curricular Oversight

- Review longitudinal outcomes of VISTA curriculum
- Participate in Institutional Effectiveness Committee CQI efforts

Thank you!

**Questions?
epc@umassmed.edu**