

RESEARCH CORES

Scientific Council

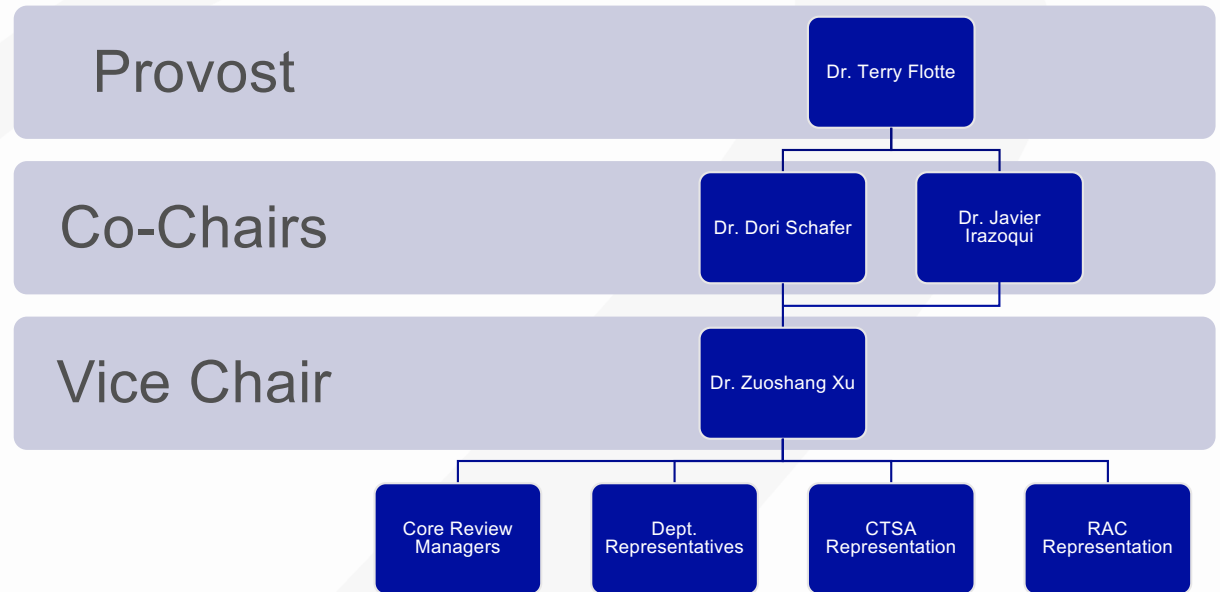
Executive Council Meeting



January 17, 2024

SCIENTIFIC COUNCIL:

Who Are We?



... with **OUTSTANDING** support by Dawn Fontaine

Scientific Council: What Is Our Role?

Duties

- Advise the Executive Council, Faculty Council, and Student Government Alliance on “scientific environment”
- Report to Executive Council, Faculty Council
- Chancellor, Provost, Deans, and EVC for Research can consult with SC on “research-related matters” and “significant issues”
- Advise and receive reports from Committees:
 - Laboratory Safety
 - Radiation Safety
 - Protection of Human Subjects in Research
 - IACUC

Advising and reporting

- Provide faculty input for considering and evaluating “activities related to research”
- Review annual budget for Office of Research
- Make recommendations to the Chancellor, Provost, Deans, and EVC for Research about funding priorities
- Serve as *ad hoc* review panel for intramural grants – report to Chancellor, Provost, Deans, and EVC for Research
- Review the performance of Research Cores
- Recommend level of support for Research Cores

More recently:

1. Working with Susanna Perkins to work with underperforming cores based on customer surveys
2. Meeting with leadership regularly to discuss core facility needs and improvements

Doc. T03-035
Passed by the BoT 8/6/2003
Amended 8/23/2006
Amended 9/18/2013

GOVERNANCE DOCUMENT
OF THE
UNIVERSITY OF MASSACHUSETTS WORCESTER

-806.1-

UMass Chan Medical School Research Core Facilities by the numbers Cynthia Nicholson

Cynthia Nicholson

<u>Centralized (OOR)</u>	<u>Department</u>	<u>Department (continued)</u>
Animal Medicine	Advanced MRI Center	Mouse Behavioral Core

Institutional Funding

1. OOR Centralized Research Cores – Subsidies for Operations

FY2021	FY2022	FY2023
\$2,603,811	\$2,549,998	\$3,000,000

2. Total including capital equipment costs for all cores

FY2021 \$6,524,405

FY2022 \$4,654,465

FY2023 \$5,432,266

TOTAL ***	\$ 23,479,621	\$ 25,143,261	\$ 25,897,517	\$ 33,598,842	\$ 32,984,215
-----------	---------------	---------------	---------------	---------------	---------------

Core Facilities: Triumphs and Challenges

Core facility strengths

- Cores have grown tremendously over the past 8+ years
- State-of-the art equipment to service our research enterprise.
- Highly skilled and knowledgeable core directors.
- Bringing in external companies and collaborators.
- Having the resources on campus has turned into new grants and collaborations=more \$\$.

Core facility challenges

In general core directors feel overburdened with running a business and understaffed.

- Core facility directors spending a lot of time on administrative paperwork/bookkeeping. Takes time away from the science.
- State-of-the art equipment is expensive. Running a cutting-edge core will likely run in the red. How to offset these costs?
- Difficult to retain highly skilled core directors and staff.
- General lack of a clear career trajectory and lacking well-defined job descriptions
- Cores are generally understaffed.
- Not one size fits all. Cores need to have different expectations for generating revenue depending on the core.
- Cores are lacking storage space

Core facility opportunities for growth

- How do we better support the cutting-edge nature of our facilities while also understanding there is an operating cost bottom line?
- How do we facilitate the core directors putting more energy into science and less on administrative tasks?
- How do we staff our facilities better?
- Can we come up with a better, more flexible model for judging core facility performance and determining subsidy?
- How can we institution-wide better support our core facilities so that they can better support us?

Research Cores: General Philosophy

Cores are here to support the research enterprise and promote the growth of our science. This comes with obtaining state-of-the-art equipment and hiring and retaining highly qualified staff.

How to balance core needs with budgetary constraints?

First Step:

Software to streamline administrative duties for core directors but it is \$\$\$
Cynthia Nicholson, Exec Direct Administration and Finance