

Dean's Welcome What's New at UMass Chan

Terry Flotte, MD

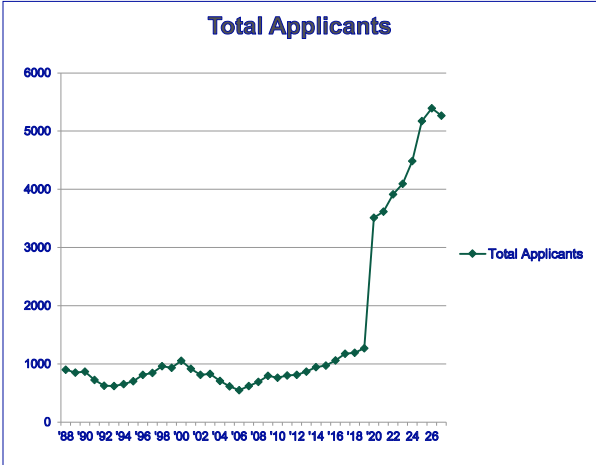


UMass Chan
MEDICAL SCHOOL

01/14/2025

1

UMass Chan SOM Highly Competitive



Total Applicants

Year	Total Applicants
'88	1000
'90	900
'92	700
'94	800
'96	1000
'98	1000
'00	1000
'02	800
'04	700
'06	600
'08	800
'10	800
'12	800
'14	800
'16	1000
'18	1200
'20	3500
'22	4000
'24	4500
'26	5300

Class of 2028

↓

Total Applications = 4903

↓


In-state = 952

↓

Out-of-state = 3951


↓

9.4% of applicants admitted



2

2




UMass Chan
MEDICAL SCHOOL

T.H. Chan
School of Medicine

CLASS PROFILE

CLASS OF 2028



235
CLASS SIZE


DEMOGRAPHICS

In-State: 63%; Out-of-State: 37%

27 states represented, plus Puerto Rico and Canada

UMass Undergrads: 29

Females: 164
Males: 66
Other: 5



Age Range: 21-40; Average Age: 24

46

ECONOMICALLY
DISADVANTAGED
BACKGROUND

23

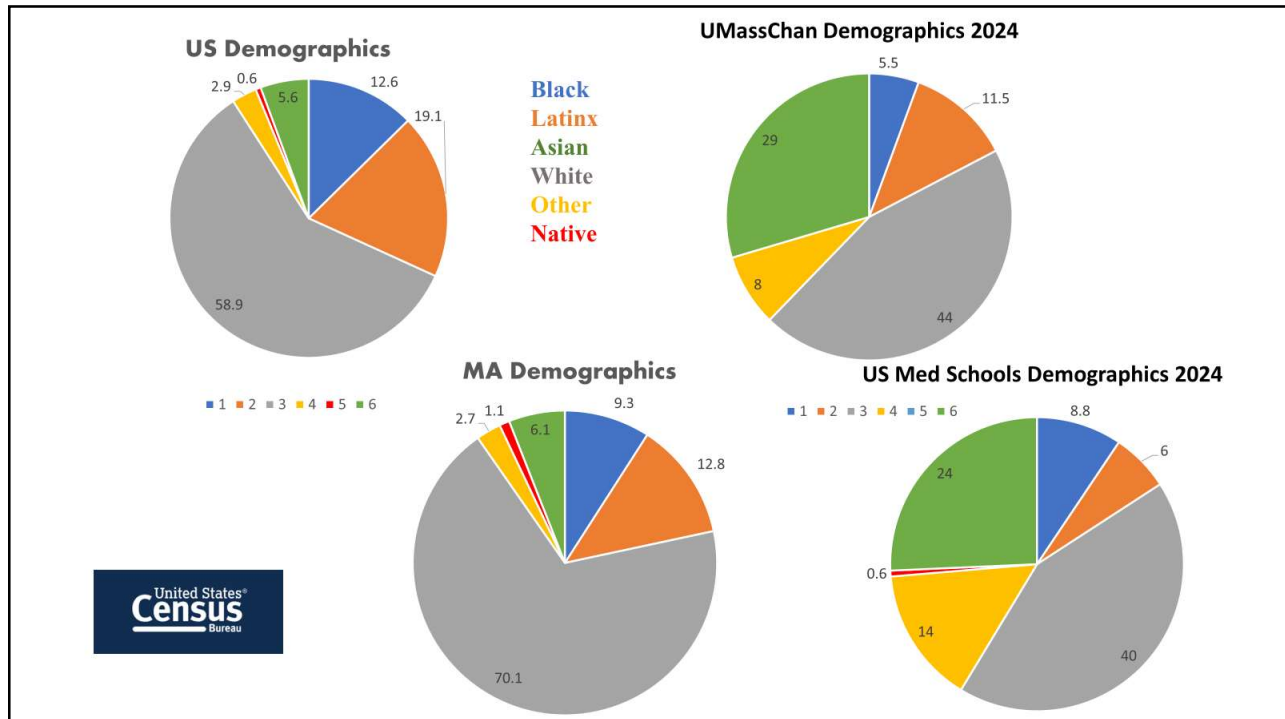
FIRST GENERATION
COLLEGE STUDENTS

Worcester Campus: 178
(including 15 MD/PhD)

PURCH Track: 25
LEAD@Lahey: 32

Average GPA: 3.87
Average BCPM: 3.7
Average MCAT: 512
MCAT Percentile: 83

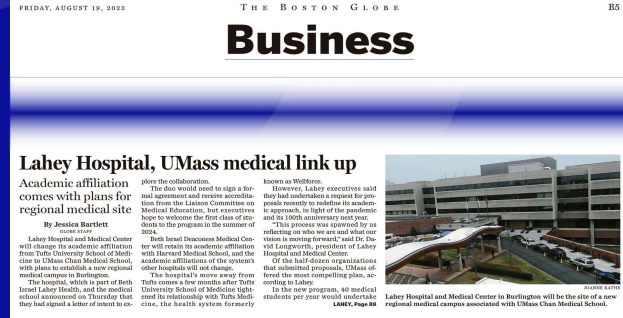
3



4

UMass Chan-Baystate campus

- First students matriculated in 2017
- New SOM educational track – *Population-Based Urban and Rural Community Health Track*



UMass Chan-Lahey is our second regional campus

- First students matriculated in summer 2024
- Special focus on leadership, health systems science and interprofessional education
- Seek to establish a research collaboration in population health & digital medicine

Newly Created Positions

Vice Provost for Health Equity

- Primary Charge to Increase Faculty Diversity
 1. Cluster Hiring for Tenure Track Faculty:
 - Enhanced Packages and additional lines
 2. Health Equity Recruitment and Career Advancement (HERCA) for Clinical Faculty:
 - Clinical faculty recruitment enhancement



Professor Milagros Rosal
Imoigele Aisiku Chair in Health Equity
Vice Provost for Health Equity

Senior Consulting Vice Provost for Mentoring, Leadership and Transformation

- Primary Charge to Coordinate all mentoring programs across all 3 schools and GME, all affinity groups
 1. LIGHT alliance: foster development of our own talented learners
 2. Grow faculty diversity from within



Mark Johnson, M.D., Ph.D.
Chair of Neurological Surgery
Maroun Semaan Endowed Professor
Senior Consulting Vice Provost
For Mentoring, Leadership and Transformation



T.H. Chan
School of Medicine

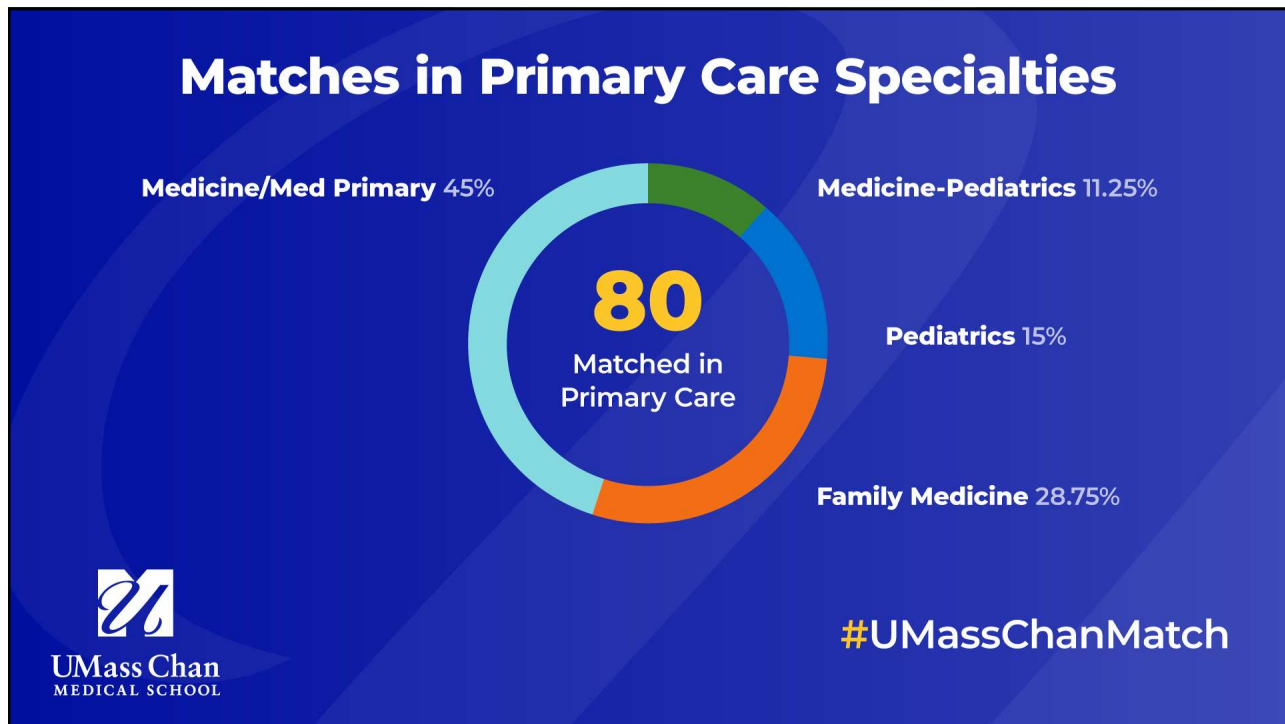
Three Initiatives to enhance hiring of URiM faculty As of 1/2025, 41 hires from URiM groups

- **Cluster Hire Program:** For tenure-track faculty, includes department incentives and enhanced startup packages
 - Total of 11 hires
- **HERCA (Health Equity and Career Advancement) Program:** for clinician and nursing educator faculty. Financial incentives
 - Total of 24 hires
- **Diversity KL2:** Coordinated with our NIH-funded Clinical and Translational Science Award, represents a mentored career development path for clinical researchers
 - Total of 6 hires

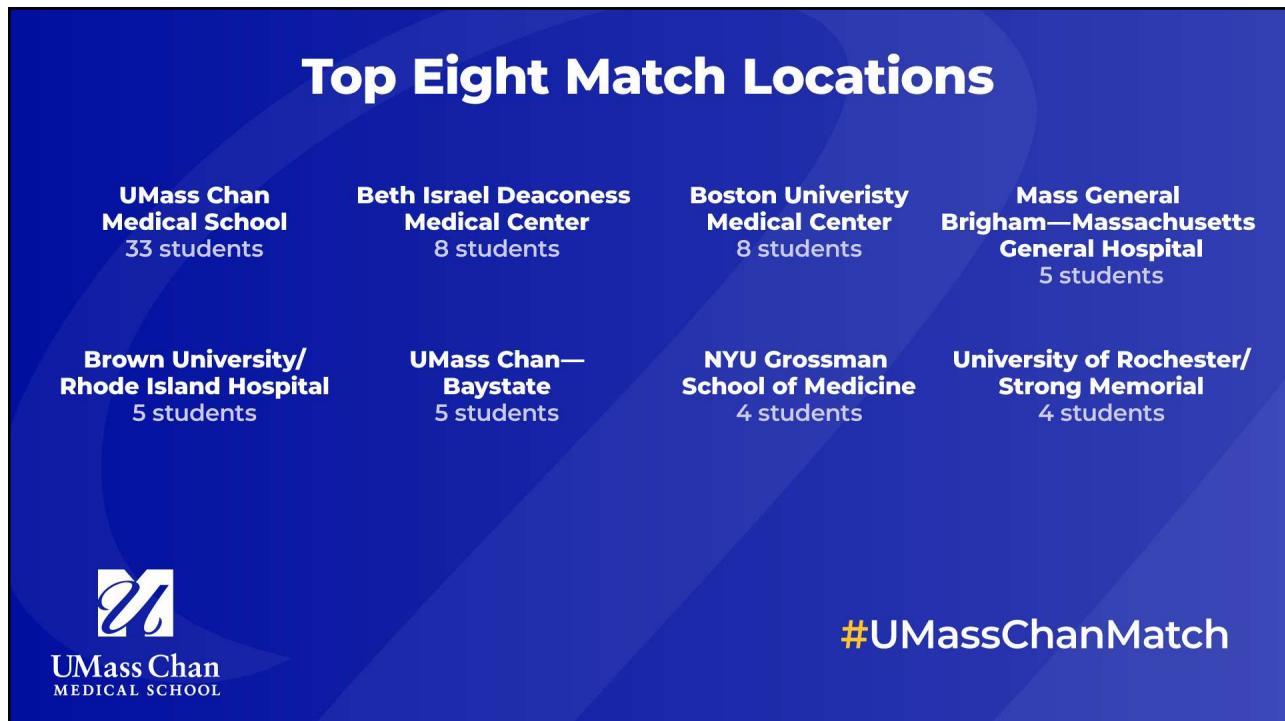
7



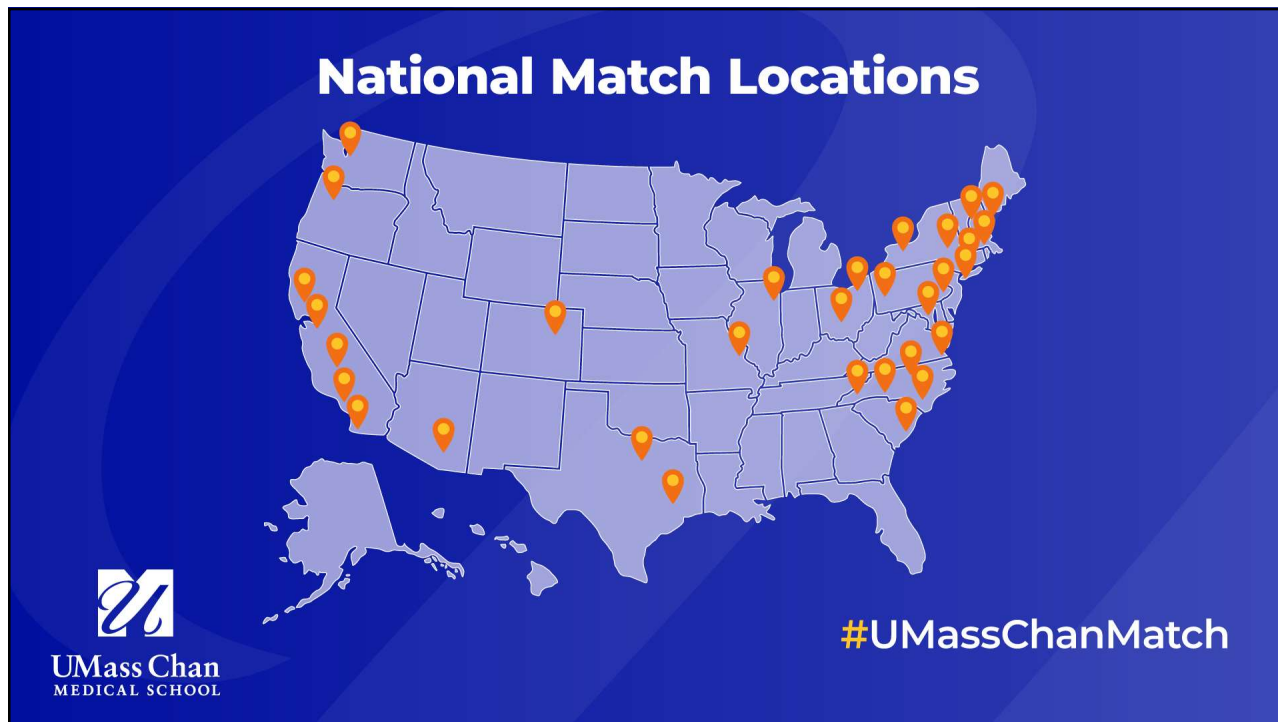
8



9



10



11



12