

# Partnering with the Office of Advancement to Secure Private Philanthropic Funding

## Important Links

- [UMass Chan Office of Advancement](#)
- [Corporate and Foundation Relations – Office of Advancement](#)
- [Institutional Information and Forms](#)

## Office Contacts

- [Dave Reynolds](#), Director of Foundation Relations
- [Prescott Stewart](#), Executive Director of Advancement

## CFR Services Available

The Corporate and Foundation Relations (CFR) team within the Office of Advancement is focused on building strong, ongoing relationships between faculty and researchers and philanthropic partners that share a similar vision in the field of study. By functioning as the primary contact with foundations' and philanthropic institutions' officers and trustees, we help secure private funding for projects in partnership with members of the UMass Chan community.

CFR's Services Include Helping To:

- Identify, tailor, and curate potential philanthropic funders for faculty and researchers
- Widely share private philanthropic funding opportunities with the UMass Chan community
- Assist in aligning applications with funder priorities and offering support in application process
- Develop and maintain longer term relationships with funders on behalf of UMass Chan

[Contact us](#) to learn about tools and foundations that support faculty, postdocs, predocs, graduate students, and medical school students. Please consult with the CFR team before approaching any foundation or private philanthropic funder.

## Office of Advancement Services Available

The CFR team is part of the larger Office of Advancement who can also assist developing philanthropic relationships with individual donors. Dave or Prescott can help identify the right colleague in Advancement to introduce you to strategize around communications, proposals, donor introductions, cultivation, and networking.

### Private Funding Opportunities

**The CFR team distributes via email a bi-weekly digest summarizing upcoming private funding opportunities to the UMass Chan Medical School community. Sign up today by emailing: [DevelopmentFundingDigest@umassmed.edu](mailto:DevelopmentFundingDigest@umassmed.edu)**

### 3 Quick Steps To Set You Up For Success

1. [Subscribe](#) to the Private Funding Opportunities Digest.
2. Save Dave's information, and reach out early and often.
3. Set up a [Pivot](#) account and customize your searches.

## BRIDGE INNOVATION & BUSINESS DEVELOPMENT

The hub for all commercialization  
activities at UMass Chan



### HELLO!

We drive UMass Chan's efforts to accelerate innovation, establish strategic partnerships and commercialize groundbreaking technologies. We connect researchers with the broader life sciences community, turning discovery into impactful solutions.

### NEW RESOURCES FOR FACULTY

- **IP Portal & Inventor Dashboard:** A self-service tool to easily track invention disclosures, intellectual property requests and IP portfolios.
- **Online Agreement Request Portal:** Simplifying the submission of non-clinical Material Transfer Agreements (MTAs) and Confidential Disclosure Agreements (CDAs) to enhance collaborations.



### CONTACT US

[bridge.umassmed.edu/](http://bridge.umassmed.edu/)

Email us: [bibd@umassmed.edu](mailto:bibd@umassmed.edu)

### WHAT WE DO

- **Intellectual Property Protection:** Safeguarding your innovations.
- **Business Development:** Tailored strategies to bring your technologies to the market.
- **Collaboration & Resource Sharing:** Facilitating partnerships with industry and external partners.



*"It doesn't matter if it's a licensing deal or spinning out a start-up or working with an industry partner - our goal is to find new and innovative ways to leverage UMass Chan research to help solve the world's health problems."*

**Parth Chakrabarti, MPH, MBA**

Executive Vice Chancellor for  
Innovation & Business Development

Welcome to the  
**UMass Center for Clinical and Translational Science (UMCCTS)**

**Our vision is to improve health and health care delivery by:**

- Advancing the science of translation
- Catalyzing high-quality research across the translational spectrum
- Building and supporting a robust translational workforce

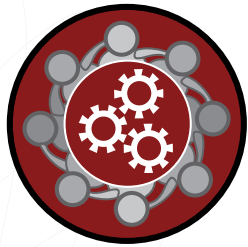
**Our overarching goals:**

- Speed the development of new products and approaches to advance patient care and community health
- Train the next generation of leaders in clinical and translational research

**Discover how we can help you!**

Our team will work with you to access our scientific strengths and unique resources.

We provide cores, funding and services that enhance the quality, efficiency, speed and impact of your clinical and translational research.



**Collaboration, Community Engagement & Team Services**

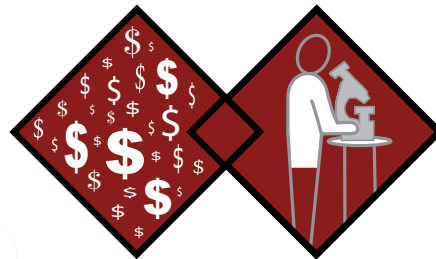
This includes:  
Clinical Partners

CTSA Network

UMass Campuses

Community & Science

Participation Cores



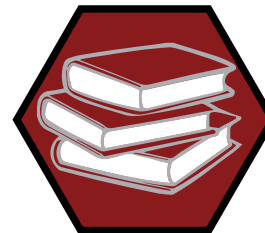
**Core Funding & Resources**

This includes:  
Pilot Grant Programs

Project Management

Research Navigation

Core Resources



**Workforce Development**

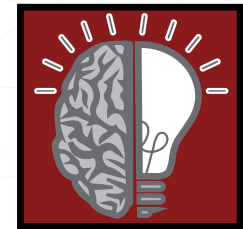
This includes:  
Undergraduate Opportunities

Junior Faculty

Master's Students

Pre- & Post-Docs

Clinical Research Professionals



**Enabling the Quality & Efficiency of Clinical Resources**

This includes:  
UMCCTS TRACs

Mult-site Collaborative Study Assistance

Regulatory Support

Informatics

Biostats & Study Design



(All icons are Quick links. Check them out!)

## Education and Training

OPPORTUNITIES	ELIGIBILITY					
	Students	Postdocs	Residents	Fellows	Jr. Faculty	Faculty
"K-Club" Research Career and Writing Group		✓		✓	✓	✓
I-Corps Program at the UMCCTS	✓	✓	✓	✓	✓	✓
Mentored Career Development (KL2) Training Program		✓		✓	✓	
Pre- & Post-Doctoral Fellowship (TL1) Training Program	✓	✓	✓	✓		
Master of Science in Clinical Investigation Program	✓	✓	✓	✓	✓	✓
MD/PhD (MSTP) Program	✓					
Clinical/Translational Research Pathway Program	✓					
Millennium PhD Program			✓	✓		
Clinical and Population Health Research PhD Program	✓					
Junior Faculty Development Program					✓	✓
Human Research Protection Program Training	✓	✓	✓	✓	✓	✓

## Highlights

### Study Development Resources

- IRB
- Office of Clinical Research
- Protocol Review Committee
- Recruitment Resources
- Quantitative Methods Core

### Clinical Research Center

- Space, staff and resources to conduct clinical studies and trials efficiently
- Comprises 5,000 sq ft, 6 exam rooms, 3 infusion bays, a small lab for packaging and shipping specimens, conference room space for monitor and study initiation visits
- Touch-down space for visiting staff and investigators
- Experienced staff with the clinical and regulatory skills to support a wide variety of studies

### Community Engaged Research Network Models:

- Campus-based community-engaged research mentorship and training

- Promote recruitment and retention of diverse study participants
- Urban and rural locales

### Research Informatics

- One-stop shop for data and analytics

### Pilot Funding

- Funds dedicated to multi-investigator pilot projects to incentivize collaborative clinical and translational science partnerships across campuses
- Inter-campus collaborative projects involving faculty members from the Worcester campus and faculty from another UMass campus

### Massachusetts Medical Device Development Center (M2D2) - UMass Lowell & UMass Chan

- Incubators/Facilities
- Medical, business and product development assistance

## Cores

1. 3-D Printing Core
2. Bioinformatics Core
3. Biospecimen, Tissue and Tumor Bank Core
4. Clinical Research Core
5. Investigational Drug Service Core
6. Office of Clinical Research Core
7. Small Molecule Screening Facility Core
8. Umbilical Cord Blood Core

## Programs

1. Biomarker Program: Proteomics/Olink
2. Biostatistics, Epidemiology, and Research Design (BERD) Program
3. Community Engagement and Collaboration Program (CECC)
4. Educational and Training Programs
5. Pilot Project Awards Program (PPP)
6. QA/QC Program
7. Regulatory Knowledge and Support Program
8. Research Informatics Program
9. Science Participation Resource Center Program (SPRC)



**A MESSAGE DR. MARLINA DUNCAN**  
**Vice Chancellor for Diversity and Inclusion**

I am excited to welcome you to our UMass Chan Medical school community! At UMass Chan, we know that diversity, equity, and inclusion are central to achieving our mission. Our charge is to create a community of health care providers, researchers, and educators dedicated to advancing knowledge, health, and wellness in the service of the community, the nation, and the world. This requires bringing together and supporting the work of exceptional learners, faculty and staff from all backgrounds and all lived experiences. We recognize that talent is not bound by race, ethnicity, class, religion, national origin, sexual orientation, gender identity, age, and/or disability status. We also know that the advancement of knowledge and healthcare practices benefits from the full participation of people with a wide range of perspectives, experiences, and ideas. Our goal is to recognize, understand, and fight against barriers – prejudice, bias, and systemic barriers – that stand in the way of creating a truly diverse, equitable and inclusive UMass Chan Medical School. I wish you the best as you make a smooth transition to UMass Chan, and I look forward to working with you to advance our diversity, equity, and inclusion goals.

## **FACULTY PROGRAMMING**

### **NATIONAL CENTER FOR FACULTY DEVELOPMENT & DIVERSITY**

UMass Chan is an institutional member of the National Center for Faculty Development and Diversity. As an institutional member, faculty members, academic professionals and learners, including residents get access to the center's online resources which include workshops, webinars, and seminars on topics related to prioritizing and managing time, cultivating mentors, and maintaining work-life balance.

#### **DEI LIAISONS**

The DEI Liaisons group is composed of faculty representatives from each academic and clinical department. These faculty are tasked with staying abreast of the University and health systems diversity initiatives, priorities, and concerns. Led by the DIO, this group meets monthly to discuss updates, advise administrators on DEI-related concerns and issues, and provide mutual counsel and support across departments.

#### **AFFINITY GROUPS**

Affinity groups are identity or shared interest groups where faculty, learners, and staff can foster a community of belonging, collegiality, and support. We have a number of affinity groups faculty are welcome to join, including the African American, Latinx, Asian and Native American (AALANA) for faculty of color, Colorful Voices for staff of color, Veterans affinity group, LGBT affinity group, among many others.

### **DIVERSITY, EQUITY, AND INCLUSION FACULTY DEVELOPMENT EDUCATION**

We offer a series of workshops and training geared towards developing faculty's skillset around topics related to diversity, equity, and inclusion. Topics include fostering inclusive classrooms and labs, inclusive pedagogy, mentoring across difference, as well as developing DEI focused mission, vision, and values statements among many others.

# DIVERSITY, EQUITY, AND INCLUSION PROGRAMMING

## DIO CAMPUS READ

Every year, the DIO hosts a Diversity Campus Read featuring books that help our community better understand topics related to diversity, equity, inclusion, and social justice through many perspectives. In 2022, we featured *Medical Apartheid* by Harriet A. Washington and *The Sum of Us: What Racism Costs Everyone and How We Can Prosper Together* by Heather McGhee.

## CENTERING THE MARGINS

Centering the Margins is a monthly series with the purpose of creating a space for the UMass Chan community to gather and engage in informal dialogue around the lived experiences of diverse and marginalized populations. The goal of these dialogues is to mobilize our community to engage in social change.

## DIVERSITY, EQUITY, AND INCLUSION TRAINING SERIES

We offer monthly drop-in trainings on implicit bias, being an upstander and addressing microaggressions, inclusive communication, and inclusive leadership. All members of the UMass Chan community are invited to participate.

## DIVERSITY AND INCLUSION SIGNATURE EVENTS

Our institution owes a great deal to all of the groups who have made tremendous contributions to our history and existence. Each has a history of achievement, resilience, and success that we should celebrate. Through monthly programming, the DIO acknowledges and celebrates the historic events, figures, and communities who have contributed to our history. These events include Black History Month, LGBTQ+ Pride Month, Latinx/Hispanic Heritage Month, Juneteenth, Asian American Pacific Islander Month, and Native American Heritage Month, and many others.

## NATIVE AMERICAN AND INDIGENOUS HEALTH INITIATIVE

UMass Chan is committed to developing a deeper understanding of the relationship between the institution, the Native and Indigenous Peoples of this region, and the land on which UMass Chan is situated. We have partnered with members of the Nipmuc Tribe to create educational opportunities for our UMass Chan and surrounding communities to learn about indigenous health and healing.

## ANTI-RACISM CHALLENGE

We offer self-directed challenge providing participants with the opportunity to learn about several DEI themes as well as ways they can actively engage in anti-racist work. Each day is designed to feature a selection of recommended activities and probing questions to Read, Watch, Listen and Engage.

## UPNEXT!

DIO's weekly newsletter, UpNext! centers the narratives of our marginalized community members and highlights their accomplishments, as well as brings attention to diversity, equity, and inclusion issues. Listed in UpNext! are also all of our upcoming events and trainings.

## MEET THE DIO STAFF!



MARLINA DUNCAN, EdD  
Vice Chancellor of Diversity  
and Inclusion



LYNN HERNÁNDEZ, PHD  
Assistant Vice Chancellor of  
Diversity and Inclusion



TIFFANY COOK, MA  
Director of DEI Integration  
and Education



JANJAY INNIS, MDIV  
Communications Content  
Specialist



HOLLY BROWN  
Administrative Manager



ANGELA PRINTY  
Data Analyst



JORGE SANCHEZ, MD  
Program Director of Diversity and  
Inclusion at Commonwealth Medicine



JULES TROBAUGH, EdD  
Diversity Manager



FERNANDA GAMA  
Project Coordinator



CANDICE BROWN  
Project Manager

For more information, visit our website at:  
<https://www.umassmed.edu/dio/>





# DRIVE

Diversity, Representation and Inclusion for Value in Education

[www.umassmed.edu/DRIVE](http://www.umassmed.edu/DRIVE)

# Advancing Diversity in Teaching & Learning at UMass Chan

*DRIVE is for anyone interacting with learners, including, but not limited to, faculty, residents, small group facilitators, and student group leaders, all of whom are an integral part of UMass Chan.*

*In aligning with our institution's values, we ask that you prioritize and model diversity and inclusive learning in your work and that you also speak up and provide feedback to others.*

## What are the goals of DRIVE?

- To promote a representative and bias-free curriculum across our learning environments
- To enhance the representation and inclusion of diverse populations in all our educational activities
- To make space for critical conversations about diversity in teaching and learning across our community.

## What is expected of me? What Resources does DRIVE offer me?

- Continue the conversation at a Monday [DRIVE Café](#)
- Build your skills by attending a DRIVE core skills or Small Group Facilitation [workshop](#)
- Apply the [Curriculum Appraisal Tool](#) when developing educational materials
- Identify resources to reduce bias in your learning materials – start with the DRIVE [library guide](#)
- Explicitly welcome feedback when presenting information to learners – consider using the DRIVE [commitment slides](#) in your presentations
- Report compliments or concerns via the DRIVE [email address](#) or [DRIVE feedback tool](#)
- You can explore the definitions of bias further by completing this [independent learning module](#).
- Visit the [stoplight terminology guide](#), a resource for improving our language to promote accurate, representative, and inclusive teaching materials and educational environments.

## DRIVE 6 areas for improvement:

1

### Setting the Context

Frame to acknowledge learners' personal experiences, intersectionality, and microaggressions

2

### Language and Terminology

Use people centered and inclusive language

3

### Images and Media

Show a range of characteristics to avoid reinforcing stereotypes

4

### Research and References

Attend to definition and representation of demographics in research

5

### Population and Patient Cases

Include population characteristics and SDOH with intentionality

6

### Closing the Loop

Utilize data to improve and tell learners about your changes



Questions? Support? Suggestions for improvement?  
Contact [drive@umassmed.edu](mailto:drive@umassmed.edu) or use the QR code to submit anonymous feedback



UMass Chan  
MEDICAL SCHOOL

# Our Leadership

**Amy Miarecki**

Assoc VC, Grants & Contracts  
Administration

**Bethanne Giehl**

Executive Director, Grants &  
Contracts

**Cheikh Camara**

Director, Sponsored Programs

**Lily Yee**

Director, Grant Accounting &  
Compliance

**Rajeshwari Bhat**

Director, Grants & Contract  
Administration



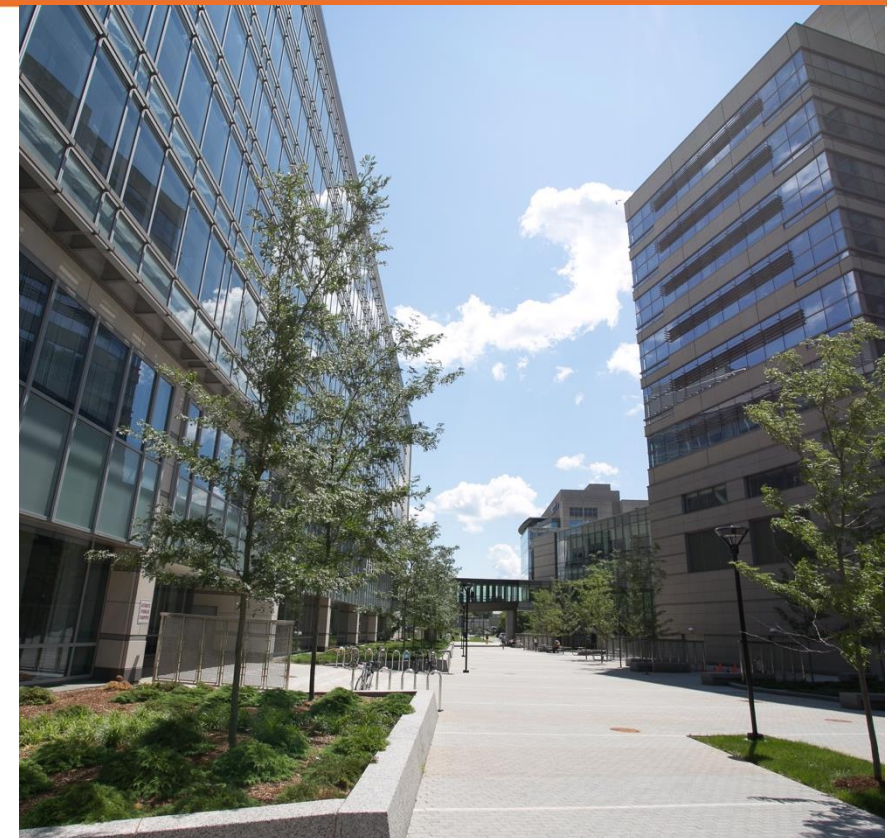
UMass Chan  
MEDICAL SCHOOL

UMASS CHAN MEDICAL SCHOOL

**Welcome to  
Grants and  
Contracts  
Administration**

**Grants and Contracts  
Administration**

UMass Chan Medical School  
55 Lake Avenue North







# Our mission

**The mission of Grants and Contracts Administration (GCA)** is to support principal investigators (PI's) and departments in proposal development, submission, award acceptance, and management of all extramural funds in compliance with University and sponsor guidelines.

# Our services

GCA is responsible after award for compliance with non-technical sponsor requirements.

GCA has responsibility for various systems required by the federal government, for providing management reports, and for keeping abreast of major grant/contract regulations changes.

For additional information and more details about GCA's services, please visit our [SHAREPOINT SITE](#).

## **GCA Offices**

### **Office of Sponsored Programs (OSP)**

OSP supports faculty and staff as an information resource on all aspects of research administration from idea to award. They aid in locating sources of funding, reviewing and approving proposals, negotiating grants and contracts, and development and dissemination of institutional policies related to research administration.

[research.funding@umassmed.edu](mailto:research.funding@umassmed.edu)

### **Grant Accounting & Compliance**

Grant Accounting is responsible for the financial review and management of restricted and externally sponsored funds. Following applicable Medical School and funding agency policies, these activities include establishing chartfield strings and budgets for new funds, review and approval of expenditure activity, cost transfers and financial closeout. Additional activities include sponsored project billing, accounts receivable management, preparation and submission of financial reports and external audits.

[GrantAccounting@umassmed.edu](mailto:GrantAccounting@umassmed.edu)

### **Cost Analysis & Compliance**

The Cost Analysis & Compliance department provides a wide range of services and oversight relating to ensuring the University's compliance with the Uniform Guidance and the Cost Accounting Standards. The division is also responsible for ongoing compliance, the compilation, submission, and training regarding the University's indirect cost proposal.

[rajeshwari.bhat2@umassmed.edu](mailto:rajeshwari.bhat2@umassmed.edu)

## IACUC Information

### Website

<https://umassmed.sharepoint.com/sites/umms-iacuc>

### PRiSM

[IACUC electronic application](#)

UMass login credentials and account setup required

## IBC Information

### Website

<https://umassmed.sharepoint.com/sites/ibc>

### PRiSM

[IBC electronic application](#)

## Staff Contacts

### Casey Moran

*Director, IACUC/IBC*

### Vanessa Pogany

*IACUC Regulatory Coordinator*

### Mali Taylor

*IBC Regulatory Coordinator*

### Elizabeth Nadeau

*Sr. Protocol Specialist IACUC*

### Damema Spragens

*Research Compliance Specialist*

### Sarah Connor

*Administrative Assistant*

## For General inquiries

[IACUC@umassmed.edu](mailto:IACUC@umassmed.edu)

[IBC@umassmed.edu](mailto:IBC@umassmed.edu)



**UMass Chan**  
MEDICAL SCHOOL

## IACUC

*Institutional Animal Care & Use  
Committee*

## IBC

*Institutional Biosafety Committee*

## IACUC

### Areas of Oversight

The animal care and use program, animal facilities, procedures and training related to research involving live vertebrate animals.

*Chaired by Dr. Matthew Gounis, PhD*

### Getting Started

1. Contact [IACUC@umassmed.edu](mailto:IACUC@umassmed.edu) to setup a PRiSM account.
2. Submit IACUC protocol through PRiSM. Protocols reviewed on a rolling basis.
3. Complete [animal health clearance and training](#).
4. Research activities may only begin once IACUC approval has been granted.

## IBC

### Areas of Oversight

Research involving use and/or storage of recombinant or synthetic nucleic acids, infectious agents, bio-toxins, and human/nonhuman primate samples.

*Chaired by Dr. Thomas Greenough, MD*

### Getting Started

1. Contact [IBC@umassmed.edu](mailto:IBC@umassmed.edu) to setup a PRiSM account.
2. Submit IBC protocol through PRiSM, by monthly submission deadline.
3. Complete EH&S-IBC [training](#).
4. Research activities may only begin once IBC approval has been granted.

## New Faculty FAQs

1. How much time will it take to receive IACUC or IBC protocol approval?  
*-Approximately 10 weeks for IACUC and 6 weeks for IBC (from submission to approval).*
2. Where can I find information on transferring animals, animal facility space needs, or other animal-care resources offered at UMass Chan?  
*-Contact Department of Animal Medicine for this information. Alternatively, information can be found on the [Animal Medicine website](#).*
3. Can animals be transferred to UMass Chan before IACUC protocol approval?  
*-Under certain conditions. Contact [IACUC@umassmed.edu](mailto:IACUC@umassmed.edu) to inquire about a Holding Protocol, which may allow animals to be held at UMass Chan while an experimental protocol is secured.*

# Getting Started

## Human Subjects: Institutional Review Board

IRB

For  
Investigators  
(PI, Sub-I)

Go to **Getting Started** on our public website:

<https://www.umassmed.edu/ccts/irb/getting-started2/>



Read the **\*Investigator Manual document (HRP-103)** and any **SOP documents** you feel are relevant to your project (click the blue buttons on the webpage to find these documents).

Complete the education requirements for human subjects research found on the CITI program website. A link to CITI can be found on:

<https://www.umassmed.edu/ccts/irb/getting-started2/>



The list of course requirements can be found in our **Education Requirements** section: <https://www.umassmed.edu/ccts/irb/education-requirements/>

Complete training for the Research Management system (RMS) eIRB Module, found on the **\*eIRB Sharepoint** website:

<https://umassmed.sharepoint.com/sites/RMS/IRB>.



**Review at least these video courses:** Intro to the IRB and Human Subject Research, PI Mini Course and RNI Course. eIRB courses 1, 2 and 3 are also recommended, as well as Course 4 if you plan to work with IRBs outside of UMass Chan. **Review relevant Job Aids/other materials.**

**Review relevant forms and templates.** For Human Subjects Research (HSR) projects, begin with **\*Investigator Study Plan (HRP-503)**. Follow its instructions to see if other documents also need to be reviewed

Document templates are located on the **\*eIRB Sharepoint website Library page** [HERE](#). **NOTE:** Always use a fresh template when filling out a new document for a study.



**\*UMASSMED.edu email/credentials are required to log in to this site/document.**

# Additional Steps

## For Clinical Research Preparedness



For  
Investigators  
(PI, Sub-I)



CRPG

Sign up for the **Clinical Research Professionals Group (CRPG)** by submitting a request via TRAcS [HERE](#).

CRPG members are kept informed via email announcements of pertinent changes or new developments at UMass Chan. In addition, CRPG meets once per month. Meetings are a forum for presentations and discussion on a variety of clinical research related topics.



Umassmed.edu  
EMAIL

Become accustomed to using and checking your **UMASSMED.edu email & Single Sign On (SSO) credentials.**

Per our IT data security policy, UMass Chan systems are only accessible via [umassmed.edu](http://umassmed.edu) credentials. **You *must* use them to log in.**

In addition, any emails you receive from our systems will also go to your [umassmed.edu](http://umassmed.edu) email account.

**You may wish to ask the UMass Chan IT Department to either:** 1) show you how to set up Outlook so that both your [umassmemorial.org](http://umassmemorial.org) and [umassmed.edu](http://umassmed.edu) accounts appear when you log in, or 2) have your [umassmed.edu](http://umassmed.edu) emails forwarded to your [umassmemorial.org](http://umassmemorial.org) account (note: this option may be going away soon).

Contact UMass Chan IT at [UMassChanHelpdesk@umassmed.edu](mailto:UMassChanHelpdesk@umassmed.edu) or (508) 856-8643.



Study  
Protocol

### Familiarize yourself with your Study(ies)

- Be sure to read your Study Protocol and other Study Documents carefully!
- Know the obligations and duties of your role and how to perform them.
- **NOTE that the PI is ultimately responsible for all aspects of the study regardless of whether they delegate study tasks or not.**



External  
IRBs

Bonus tip! **If you will be working with an IRB that is NOT UMass Chan (External IRB)** be sure to 1) familiarize yourself with all of their requirements, and 2) view *our* information online regarding Reliance Agreements [HERE](#).

# Need More Help?



Virtual Office Hours Are Available!



## The IRB staff offer virtual Office Hours via Zoom!

The Basics for Coordinators & Students

This time is used to answer questions regarding the RMS eIRB system as well as other more general IRB related questions.

For a list of days/times that **IRB** virtual **Office Hours** are offered as well as the Zoom link to them, please use the following link:

[https://umassmed.sharepoint.com/sites/RMS/IRB/SitePages/eIRB Office Hours page.aspx](https://umassmed.sharepoint.com/sites/RMS/IRB/SitePages/eIRB%20Office%20Hours%20page.aspx)



## The UMass Center for Clinical and Translational Science (UMCCTS) also offers virtual Office Hours via Zoom!

This time is used to answer questions regarding the Translational Research Accelerator (TRAcS) portal.

TRAcS provides a single point of coordinated access to UMCCTS cores and services, including those related to clinical trial development and implementation, biorepository, research navigation, access to study cohorts, data analysis, and dissemination of results.

For a list of days/times that **TRAcS** virtual **Office Hours** are offered as well as Zoom links to them, please use the following link:

<https://umassmed.sharepoint.com/sites/ccts/SitePages/TRAcS.aspx>

**Note:** For both types of Office Hours, *no appointment needed, just drop in when we're scheduled to be there!* If none of the days/times listed work for you, please let us know and we can set up an alternative time to discuss your issue.

# Institutional Research, Evaluation, & Assessment's Role and Function



The **mission** of the **Office of Institutional Research, Evaluation, & Assessment (IREA)** is to provide support to the Office of the Dean/Provost, Office of the Chancellor, and external reporting functionality to the University of Massachusetts President's Office as well as state and federal organizations. IREA reports to the Vice Provost for Educational Affairs providing an umbrella of support across the three schools comprising the UMass Chan Medical School campus.

## **The Office of IREA has four *primary* goals:**

**Goal 1:** Responsible for gathering, analyzing, and reporting the data which supports numerous critical functions outlined in the UMass Chan Medical School's mission, including administrative reporting (e.g., educational performance measures and quality indicators for mission-based management), and accreditation for LCME, NECHE, and CCNE. [Total=93.5 IR surveys]

**Goal 2:** Provide assessment consultation on test construction, student examination scores and grading, conduct item and test analyses, and produce associated reports for students and faculty.

**Goal 3:** Deliver curricula evaluation support by providing instrument design and production services, data analyses, evaluation, interpretation of results, and course evaluation reporting. ***This includes support to faculty who need evaluation data for promotion.***

**Goal 4:** Conduct research in healthcare education, as well as provide consultation on and assistance with research design, instrument design, data collection and analyses, interpretation of results, preparation of abstracts and papers for submission to journals and conferences, and outcomes to support centrally funded education grants and scholarly activity.

## **IREA team members:**

Susan Barrett, MS; Institutional Research Analyst II  
Moya Pemberton; Institutional Research Analyst II  
Brianna Robuccio; Institutional Research Analyst II  
Ashlyn Roy; Institutional Research Analyst II  
Carl Davery Bland; Institutional Research Analyst III  
Michele Carlin; Institutional Research Analyst III  
Michael O'Connor, MA; Institutional Research Analyst III  
Wei Xia, MA; Institutional Research Analyst III  
Mary L. Zanetti, EdD; Senior Director

Feel free to contact us at [IREA@umassmed.edu](mailto:IREA@umassmed.edu) for assistance.

New Faculty Orientation, January 11, 2023  
Prepared by Mary L. Zanetti, EdD, Senior Director for IREA

## How to Get IT Help

### IT Helpdesk

**IT Employee Center:** <https://umassmed.service-now.com/>

**Phone:** (508) 856-8643

**Email:** [UMassChanHelpdesk@umassmed.edu](mailto:UMassChanHelpdesk@umassmed.edu)

**Location:** Main Campus Building, S1-112 across from T.H. Chan School of Medicine Student Lounge

#### Hours of Operation

Monday – Friday

**In-person Support:** 7:30 am – 5:30 pm

**Phone Support:** 7:30 am – 5:30 pm

**Live Chat Support:** 9:00 am – 5:00 pm

**Email Support:** Addressed in the order they are received; response within two business days

Classroom Technology Assistants (CTAs) are available to assist in the classroom with your technology needs. Please send audio visual meeting and event support requests to the IT Helpdesk with as much lead time as possible. Technicians are available for training and consultation by request.

## IT – Academic Technology

### Our Team

Patricia (Patty) Lanzillotti, Associate CIO, IT – Academic Technology

[Patricia.Lanzillotti@umassmed.edu](mailto:Patricia.Lanzillotti@umassmed.edu)

Abhilasha (Abhi) Yalamanchili, Senior Director, IT – Academic Technology (OASIS, PeopleSoft, Academic tool integrations)

[NutsandBolts@umassmed.edu](mailto:NutsandBolts@umassmed.edu)

Jenene Cook, Manager, IT – Academic Technology (Instructional Design & Technology)

[AcademicInstructionalDesignandTechnology@umassmed.edu](mailto:AcademicInstructionalDesignandTechnology@umassmed.edu)

Jack Cleary, Manager, IT Technical Services (Helpdesk)

[UMassChanHelpdesk@umassmed.edu](mailto:UMassChanHelpdesk@umassmed.edu)

Educational Need or Pedagogical Approach	Supporting Technology
Classroom polling and engagement technology	Top Hat <sup>+</sup>
Curriculum Management	OASIS
Digital exams and educational assessment technologies	ExamSoft <sup>+</sup> , Blackboard Learn <sup>+</sup>
Educational authoring applications	Blackboard Learn <sup>+</sup> , Articulate Rise* & Storyboard*
Instructional Design (online courses, Independent Learning Modules)	Blackboard Learn <sup>+</sup> , Articulate Rise* & Storyboard*
Learning Management System (LMS)	Blackboard Learn <sup>+</sup>
Lecture Capture	Echo360 <sup>+</sup> , Zoom <sup>+</sup>
Specialty teaching & learning technology (Virtual Microscopy)	Best Network
Video platform systems	Echo360 <sup>+</sup>

<sup>+</sup>Standard group trainings are available July-August. Additional trainings and consultations are available upon request.

\*Licenses are limited to Academic Technology team; tools are used to provide associated services.



UMass Chan  
MEDICAL SCHOOL

# Lamar Soutter Library

Education • Research • Health Care

*Empowering the future. Preserving the past.*

The Library is your key to access a wide range of resources, services, and expertise including:

## Electronic Resources

- Databases
  - PubMed
  - UpToDate
  - Ovid
  - DynaMed
  - VisualDx
  - Scopus
  - ++ more
- eJournals
- eBooks
- Subject Guides
- Institutional Repository

## Services

- Interlibrary Loan
- Off-Campus Access
- Borrowing
- Technology Support
- Archives & Special Collections

## Events

- Curated Displays
- Author Talks
- Educational Gatherings
- Visiting Artists
- Workshops and Classes



## Clinical and Educational Services

- Clinical Instruction
  - Evidence Based Medicine
  - Expert Searching
- Systematic Review Support
- Nursing Resources and Reference Support
- Bibliometric Management Support
  - Endnote
  - Refworks

## Research & Scholarly Communication Services

- Research Impact Tracking
- Bibliometric Analysis
- NIH Public Access Compliance Support
- Research Data Management Services
- Copyright, Author Rights, Fair Use
- Scientific Writing
- Publishing Support



<https://library.umassmed.edu>

University Campus, 1<sup>st</sup> Floor

Staffed Hours: Mon-Friday

24/7 Access to UMass Chan/UMMHC Faculty

*And so much more. Got a Question? Just Ask!*



Office of Well-Being (OWB) empowers the UMass Chan community by promoting optimal well-being in six dimensions: emotional, physical, occupational, intellectual, social, spiritual.

**Better Health | Better Wellness | Every Day | Everyone**

Here are some of the programs and resources available to you:

Office of Well-Being SharePoint

Explore our page, check out all our OnDemand programs, and learn about the ways you can get involved with our office! To sign into SharePoint, you will be asked for your UMass Chan email and password. Use the QR Code for quick access! <https://umassmed.sharepoint.com/sites/OfficeofWell-Being>



Access OWB SharePoint

Employee Assistance Program

**Confidential, free, brief, solution-focused counseling** with a licensed behavioral health clinician, available to help you manage and cope with a wide variety of work and/or personal stress.

<https://www.umassmed.edu/eap/>

- Appointments available within 3-5 business days
- Available for in the moment emotional support via phone 24/7
- Legal and Financial consultation & referral
- Child and Senior Care information & referral
- Contact the EAP 24/7: 1-800-322-5327 | [eap@umassmed.edu](mailto:eap@umassmed.edu)

Your Work-Life Website

Free resources and support at your fingertips. Browse a robust library of articles and resources to support your well-being at every stage of life.

- <https://helpwhereyouare.com/CompanyLogin/1006/umasschan> Company Code: OWBEAP

Wellness Program

The Wellness Program at UMass Chan Medical School is dedicated to supporting and strengthening the health and wellness of our community by providing diverse tools, resources, and opportunities to the UMass Chan community.

Programs include Mindfulness and Movement, Earth Yoga Classes, CPR and Blood Pressure Screening, Community Supported Agriculture, Wellness Fair, On Demand Programs, Friendly Fitness Challenges, and so much more.

Visit our SharePoint to register for “Upcoming Events!”

# Women's Faculty Committee

## Women's Faculty Committee Mission Statement

The Mission of the Women's Faculty Committee (WFC) of UMass Chan Medical School/UMMH is to address the needs of women faculty and promote the status of women in the UMass Chan Medical School and the UMass Memorial Health Care clinical system.

### Our goals include the following:

- To encourage the hiring, promotion, and retention of women faculty
- To provide appropriate programming and special events to enhance career development.
- To provide oversight in hiring individuals in administrative and leadership positions in the school and clinical system as well as oversight of the composition of the major committees in each system so as to have fair representation.
- To promote Women's Health initiatives in the clinical system and medical school curriculum.
- To provide mentoring of medical and graduate students for careers in clinical and academic medicine.
- To create a supportive and welcoming environment so women faculty may grow in their roles as clinicians, educators, researchers, scholars, leaders, and mentors.

### The WFC Sponsors the following annual events:

- Women's History Month event celebrating the national theme (the 2024 Women's History Month Theme was "Placing the 'Equity' in Women's Health ") – March 2024
- Women's Health Month event highlighting local research in health topics – June 2024
- Women's Faculty Awards ceremony celebrating the accomplishments of UMass Chan Faculty in education, research, and mentoring

### Contact Information:

- Co-chairs: Alexandra Wink, PhD (Basic Science – [Alexandra.Wink@umassmed.edu](mailto:Alexandra.Wink@umassmed.edu)) and Abita Raj, MD (Clinical – [Abita.Raj@umassmemorial.org](mailto:Abita.Raj@umassmemorial.org))
- Faculty Affairs Support: Carrie Wambach ([faculty.development@umassmed.edu](mailto:faculty.development@umassmed.edu))

**The WFC meets over Zoom on the first Thursday of each month at 12:00 noon. Contact [faculty.development@umassmed.edu](mailto:faculty.development@umassmed.edu) for the Zoom link. Meetings are open to all, regardless of gender identity and faculty status.**



## FACULTY GUIDANCE ON CONFLICTS OF INTEREST AND CONFLICTS OF COMMITMENT

UMass Chan faculty are encouraged to share their expertise facilitating the translation of research into practice. However, engaging in these outside activities (whether through advisory boards, consulting agreements, start-ups, etc.) can create real or perceived Conflicts of Interest (COI) and Conflicts of Commitment (COC). Such conflicts are often unavoidable and are not necessarily prohibited, but they must be timely disclosed, reviewed, and, when appropriate, mitigated and monitored. Managing conflicts is essential to preserve research integrity, protect research security, safeguard your reputation and that of UMass Chan, and protect research subjects and patients. Visit the [Conflict of Interest](#) page for additional information.

### *Disclosure Requirements*

*Per University policy, potential COI's and COC's must be disclosed. It is the responsibility of Faculty, investigators, and senior officials to disclose outside activities and financial interests held by them (or their family members) that are reasonably related to their Institutional Responsibilities. UMass Chan utilizes an electronic COI (eCOI) system where disclosures must be made at the following times:*

- *At Hire: Within 60 days of hire or promotion (prior to serving as an Investigator)*
- *Annually: As part of the yearly campaign (usually April)*
- *Within 30 days of engagement in a new Outside Activity, substantive change in financial interest or substantive change in a previously approved Outside Activity.*

### **Outside Activities**

Faculty members are expected to devote their primary professional loyalty, time, and energy to their position at UMass Chan. Ordinarily, state employees are not permitted to engage in Outside Activities that overlap with their Institutional Responsibilities. However, faculty are given special authorization by the Commonwealth of Massachusetts to devote limited time to Outside Activities because of the recognized benefits to faculty, the institution and society of such engagements. Review and approval from your Department Chair with support from COI officials, is required prior to engaging in an Outside Activity to ensure a COI, COC or other conflict does not exist. Where an actual or perceived conflict exists, mitigation measures may be taken as directed by the appropriate COI Committee and all Outside Activities must be disclosed.

Please see the [Policy on Faculty Consulting and Outside Activities](#) for additional information.

### **Research-Related Disclosures and Certifications**

Faculty Members and other investigators must disclose any potential COIs at the time of research proposal submission and in connection with other research-related transactions (e.g., SRAs, Licensing Agreements, procurements). Conflict-related certifications are required by the Office of Sponsored Programs, the Office of Clinical Research, the IRB and the Office of Innovation and Business Development (aka BRIDGE). You must either certify that you have NO potential conflicts or flag any financial interests that could be related to the specific research project or transaction. If you have any such interests, you must ensure that they are accurately reflected in your COI Disclosure Form.

### **Review of Potential Research-Related COIs**

The Office of Management, in conjunction with the appropriate COI Committee will review COI disclosures to determine if an actual or perceived conflict exists. If a conflict requires management (mitigation), a management plan will be issued by the appropriate COI Committee and filed with funding agencies, as required.

For additional information regarding COI, COI Committees, etc., please contact the Office of Management at [coi@umassmed.edu](mailto:coi@umassmed.edu) or via phone at 508 – 856 – 6960.

# Human Resources

## Welcome to UMass Chan Medical School: New Faculty HR Guide

Congratulations on joining UMass Chan Medical School! As a new faculty member, we are thrilled to welcome you to our esteemed institution. To ensure a smooth transition and to support you in navigating various HR processes, we have compiled this guide to provide you with essential information and contacts for your convenience. We look forward to supporting your journey as a valued member of our faculty community.

**MyHR Hub** <https://umassmed.sharepoint.com/sites/hr/> is the best resource for all your employment related questions and contacts. Specific HR individuals, Holiday and Payroll Calendars, and access to our Learning Management System, can all be found on *MyHR Hub*. Additional HR related information can be found on our public facing website <https://www.umassmed.edu/hr/>

**Benefits:** Understanding and accessing your benefits package is crucial for your overall well-being. For inquiries regarding benefits enrollment, coverage details, and eligibility, please contact:

HR Benefits Department  
508-856-5260, Option 1, Option 1  
[Benefits.umms@umassmed.edu](mailto:Benefits.umms@umassmed.edu)  
<https://www.umassmed.edu/hr/benefits/>

**Compensation:** Ensuring fair and competitive compensation is essential. For inquiries regarding salary, positions descriptions, or compensation-related matters, please contact:

HR Compensation  
508-856-5260, Option 7  
[Compensationumms@umassmed.edu](mailto:Compensationumms@umassmed.edu)  
<https://www.umassmed.edu/hr/compensation/>

**Talent Acquisition:** Our Talent Acquisition team is here to help you hire the best and the brightest. While most HR related matters relating to hiring or promoting staff will be managed by your academic administrator, iCIMS manager access or specific questions can also be answered by our exceptional recruiters:

HR Talent Acquisition  
[talent@umassmed.edu](mailto:talent@umassmed.edu)

**Onboarding:** Our onboarding team are available to assist you or your staff with HR Orientation or Onboarding tasks:

HR Onboarding  
508-856-5260, Option 1, Option 4  
[onboarding@umassmed.edu](mailto:onboarding@umassmed.edu)

**Immigration Services:** For international faculty members requiring assistance with visas or green cards, or for any faculty who have questions about hiring a foreign national, our dedicated immigration services team is here to support you:

Immigration Services Office  
508-856-5260, Option 3  
[Immigrationservices@umassmed.edu](mailto:Immigrationservices@umassmed.edu)  
[https://www.umassmed.edu/hr/immigration\\_services/](https://www.umassmed.edu/hr/immigration_services/)

**Employee Relations:** Maintaining a positive work environment and resolving any workplace concerns is integral to our community. If you have questions regarding non-faculty employment policies, conflict resolution, or leaves of absence, please reach out to:

HR Employee Relations  
508-856-5260, Option 5, Option 1  
[EmployeeRelations@umassmed.edu](mailto:EmployeeRelations@umassmed.edu)  
[FMLA.UMMS@umassmed.edu](mailto:FMLA.UMMS@umassmed.edu) (FMLA/PFML/PLOA)  
[Workerscomp.umms@umassmed.edu](mailto:Workerscomp.umms@umassmed.edu) (Workers Compensation)

**Labor Relations:** If you need guidance interpreting collective bargaining agreements, please contact:

HR Labor Relations  
508-856-5260, Option 6  
[LaborRelations@umassmed.edu](mailto:LaborRelations@umassmed.edu)

**Learning and Organizational Development:** We are committed to fostering your professional growth and success. While the Office of Faculty Affairs conducts myriad opportunities for your professional growth as an academic, HR can offer you and your staff additional learning opportunities or organizational development consultations:

HR Learning Development  
[LandD@umassmed.edu](mailto:LandD@umassmed.edu)

**Payroll:** The Payroll office sits within Finance rather than HR, but are available to answer your paycheck, tax, time entry, or time off questions or corrections.

Payroll  
508-856-7855  
[payrollumms@umassmed.edu](mailto:payrollumms@umassmed.edu)

**HR Direct:** This is where you will enter or approve timekeeping, find paystubs, update personal details or obtain tax documents. <https://www.umassmed.edu/hr/hrdirect/>

**HR Leadership Team:** Lastly, if you are unable to obtain the answers you seek, or have more complex issues that need delicate attention, please feel free to reach out to the HR Leadership Team:

Carolyn Brownawell – Deputy EVC Chief HR Officer [Carolyn.Brownawell2@umassmed.edu](mailto:Carolyn.Brownawell2@umassmed.edu)  
Carolyn Gorham – Assoc. VC People Strategies [Carolyn.Gorham@umassmed.edu](mailto:Carolyn.Gorham@umassmed.edu)  
Jackie McGravey – Asst. VC People Development & Wellness [Jacquelyn.McGravey2@umassmed.edu](mailto:Jacquelyn.McGravey2@umassmed.edu)  
Vanessa Long - Exec. Director People Operations [Vanessa.Long@umassmed.edu](mailto:Vanessa.Long@umassmed.edu)



UMass Chan  
MEDICAL SCHOOL



## UMass Chan Research Cores – Info Guide

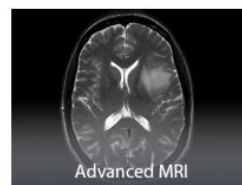
The UMass Chan Research Core Facilities are shared resources available to all internal investigators for a fee-for-service charge. The facilities offer a wide range of services to the research community including cutting edge technologies, high-end instrumentation, and technical support for basic, translational, and clinical research. We are committed to enhancing and expanding the capabilities of your research projects. Our Core Directors are leaders in their fields and offer consultation on your projects and are collaborative partners. UMass Chan has over 40 core facilities!



Welcome to the Cores



AAV Manufacturing Facility



Advanced MRI



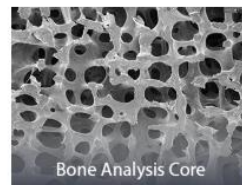
Animal Medicine



Bioinformatics



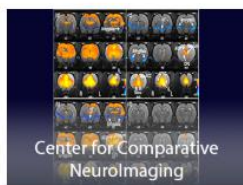
Biorepository



Bone Analysis Core



Cardiovascular & Surgical Models Core



Center for Comparative Neuroimaging



Clinical Research Center



Conquering Diseases



Cryo-EM

**How to Use Core Facilities** <https://www.umassmed.edu/research/cores/>

If you don't see what you need for your research, contact us and we'll assist you. Please scroll through the homepage to access the various core websites and, for services requested, contact the Core directly as indicated on their individual sites. The majority of the websites will have a rate page indicating the various prices. If using our UMass Chan Core facilities, please recognize the contribution of key core personnel in your research projects when appropriate.

**View the 3D Tours at** <https://www.umassmed.edu/research/cores/virtual-tours/> more coming soon!

**For more information contact:**

Megan Barbale, RCA Sr. Core Accountant, [Megan.Barbale@umassmed.edu](mailto:Megan.Barbale@umassmed.edu)

Lisa Koss, RCA Core Accountant, [Lisa.Koss@umassmed.edu](mailto:Lisa.Koss@umassmed.edu)

Elizabeth Real, RCA Core Accountant, [Elizabeth.Real@umassmed.edu](mailto:Elizabeth.Real@umassmed.edu)

Christina Zollo, RCA Staff Accountant I, [Christina.Zollo@umassmed.edu](mailto:Christina.Zollo@umassmed.edu)

## Optical Animal Imaging Core

Director: Mary Rusckowski

Phone: 508-856-6972

[mary.rusckowski@umassmed.edu](mailto:mary.rusckowski@umassmed.edu)

Optical Xenogen IVIS 100 imager & Spectrum CT Imager for in vivo detection and quantification of cells

## PAC-BIO Core Facility

Director: Maria Zapp

Phone: 508-856-3265

[maria.zapp@umassmed.edu](mailto:maria.zapp@umassmed.edu)

Offers Next Generation SMRT Sequence Analysis in support of a wide range of research applications

## PQHS-Research Informatics Core

Director: Adrian Zai

Phone: 508-856-8994

[adrian.zai@umassmed.edu](mailto:adrian.zai@umassmed.edu)

Provides services such as Compliant Access to Data, Data Innovation Research and Spearhead Data Collaborations

## Quantitative Methods Core

Director: Bruce Barton

Phone: 508-856-8525

[bruce.barton@umassmed.edu](mailto:bruce.barton@umassmed.edu)

Clinical research support in biostatistics, experimental design, and data management

## Respiratory Physiology Core – Coming Soon!

## RLASTIC Core

Director: Mary Rusckowski

Phone: 508-856-6972

[mary.rusckowski@umassmed.edu](mailto:mary.rusckowski@umassmed.edu)

Single photon computerized tomography (SPECT), positron emission computerized tomography (PET) & X-Ray computerized tomography (CT) cameras for imaging small animals

## SCOPE Facility

Director: Christina Baer

Phone: 508-856-6024

[christina.baer@umassmed.edu](mailto:christina.baer@umassmed.edu)

Advanced quantitative imaging services including super-resolution, multi-photon, confocal, and live-cell microscope, plus spatial proteomics and transcriptomics

## Seahorse Analyzer Facility

Director: David Guertin

Phone: 508-856-8064

[david.guertin@umassmed.edu](mailto:david.guertin@umassmed.edu)

Seahorse Cytations

## Skin Diseases Research Core

Director: John Harris

Phone: 508-856-3688

[john.harris@umassmed.edu](mailto:john.harris@umassmed.edu)

Basic & translational research on mouse and human skin including acquisition of human skin, skin fluid, or skin cells for translational assays such as flow cytometry, ELISA, or single cell RNA sequencing

## Small Molecule Screening

Director: Paul Thompson

Phone: 508-856-8492

[paul.thompson@umassmed.edu](mailto:paul.thompson@umassmed.edu)

Develop high-throughput screens to discover novel drugs & chemical probes utilizing in-house 1M compound collection & detection technologies

## Tissue Bank

Director: Karl Simin

Phone: 508-856-3959

[karl.simin@umassmed.edu](mailto:karl.simin@umassmed.edu)

Human tissues using a dynamic collection, storage, and distribution service

## Tissue Culture & Enzyme Supply

Director: David Lambright

Phone: 508-856-6876

[david.lambright@umassmed.edu](mailto:david.lambright@umassmed.edu)

Supplies, restricted/modifying enzymes, kits for DNA preparation & cleanup and related reagents

## Transgenic Animal Modeling Core

Director: Heather Gray-Edwards

Phone: 508-856-4051

[heather.grayedwards@umassmed.edu](mailto:heather.grayedwards@umassmed.edu)

Produces genetically altered mice & rats

## Umbilical Cord Blood & Birth Tissues Facility

Director: Kristen Matteson

Phone: 508-334-8706

[kristen.matteson@umassmed.edu](mailto:kristen.matteson@umassmed.edu)

Providing cord blood units collected real-time from deliveries occurring at the UMass Memorial Labor & Delivery Maternity Unit

## Vector Core Facility

Director: Guangping Gao

Phone: 508-856-3563

[guangping.gao@umassmed.edu](mailto:guangping.gao@umassmed.edu)

Cutting-edge technologies to create and produce high quality viral vectors; provide the most suitable & efficient gene transfer vectors for research applications

## PARTNER WITH US!!

### Core Facilities Inquiries:

**Megan Barbale**  
Senior Core Accountant  
508-856-1010

**Lisa Koss**  
Core Accountant  
508-856-7588

**Beth Real**  
Core Accountant  
508-856-4522

**Christina Zollo**  
Staff Accountant  
508-856-6401

<https://www.umassmed.edu/research/cores>

E-mail: [RCA@umassmed.edu](mailto:RCA@umassmed.edu)

REV 9/24



**VISIT OUR SISTER CAMPUSES**  
**AMHERST:**

[www.umass.edu/ials/core-facilities](http://www.umass.edu/ials/core-facilities)

**BOSTON:**

<https://www.umb.edu/research/cores>

**DARTMOUTH:**

<http://www.umassd.edu/research/cores>

**LOWELL:** [www.uml.edu/research/CRF/](http://www.uml.edu/research/CRF/)



**UMass Chan**  
**MEDICAL SCHOOL**

## Advanced MRI Center

**Co-Directors:** Salman Shazeeb & Manoj Saranathan

**Phone:** 508-856-1884

[mohammed.shazeeb@umassmed.edu](mailto:mohammed.shazeeb@umassmed.edu)

3T Philips body MRI system for human and animal research equipped with a variety of coils for MRI studies of different organ systems; neuroimaging (fMRI, DTI, etc.), body MRI, cardiac MRI, and metabolic imaging (MR spectroscopy)

## Animal Medicine

**Director:** George DeMarco

**Phone:** 508-856-3150

[george.demarco@umassmed.edu](mailto:george.demarco@umassmed.edu)

In vivo research by providing animal care, training, surgical, diagnostic, and technical services

## BioImage DMS Core

**Director:** Caterina Strambio-De-Castillia

**Phone:** 508-856-2383

[caterina.strambio@umassmed.edu](mailto:caterina.strambio@umassmed.edu)

[alex.rigano@umassmed.edu](mailto:alex.rigano@umassmed.edu)

Support and training services for the curation, storage, management, sharing, and retrieval of image data; ensures full compliance with the data management and sharing requirements set forth by the NIH and NSF

## Bioinformatics Core

**Director:** Ozkan Aydemir

**Phone:** 774-455-4789

[biocore@umassmed.edu](mailto:biocore@umassmed.edu)

Computational services in analyzing data generated from next generation sequencing studies

## Bone Analysis Core

**Director:** JaeHyuck Shim

**Phone:** 508-856-6961

[jaehyuck.shim@umassmed.edu](mailto:jaehyuck.shim@umassmed.edu)

Services for bone imaging, histology and histomorphometry

## BSL-3 Core Laboratory

**Director:** Hardy Kornfeld

**Phone:** 508-856-2646

[hardy.kornfeld@umassmed.edu](mailto:hardy.kornfeld@umassmed.edu)

Laboratory space for BSL-3 containment

## Cardiovascular & Surgical Models

**Director:** Timothy Fitzgibbons

**Phone:** 508-856-6573

[timothy.fitzgibbons@umassmemorial.org](mailto:timothy.fitzgibbons@umassmemorial.org)

Models of metabolic diseases within cardiovascular disease models. Providing surgical

and study models across multiple scientific platforms.

## Clinical Research Center (CRC)

**Director:** Bethany Trainor

**Phone:** 508-856-2800

[bethany.trainor@umassmed.edu](mailto:bethany.trainor@umassmed.edu)

Providing efficient, reliable and high-quality study support for UMass clinical investigators

## Cryo-EM Core Facility

**Director:** Chen Xu

**Phone:** 774-502-6698

[chen.xu@umassmed.edu](mailto:chen.xu@umassmed.edu)

Titan Krios, Talos Arctica, Glacios, Aquilos, Vitroboots & Gatan K3 Cameras, Phase plate solution & tomography software

## Crystallography & Drug Design

**Director:** Ala Shaqra

**Phone:** 508-856-2636

[ala.shaqra@umassmed.edu](mailto:ala.shaqra@umassmed.edu)

Provides instrumentation for determination of crystal structures using X-Ray diffraction techniques

## Deep Sequencing Core

**Director:** Ellen Kittler

**Phone:** 508-856-6137/3265

[ellen.kittler@umassmed.edu](mailto:ellen.kittler@umassmed.edu)

Next Generation Sequence Analysis. Services are provided using current Illumina NovaSeq6000 and MiSeq instrumentation.

## Drosophila Resource Facility

**Director:** Andreas Bergmann

**Phone:** 508-856-6423

[andreas.bergmann@umassmed.edu](mailto:andreas.bergmann@umassmed.edu)

Low/High Yeast Brown food and Yellow food

## Electron Microscopy Core Facility

**Director:** Greg Hendricks

**Phone:** 508-856-2602

[gregory.hendricks@umassmed.edu](mailto:gregory.hendricks@umassmed.edu)

Scanning & transmission electron microscopes with ancillary equipment for key ultrastructural procedures from the tissue to the molecular level

## Flow Cytometry Core

**Director:** Carol Schrader

**Phone:** 508-856-3276

[carol.schrader@umassmed.edu](mailto:carol.schrader@umassmed.edu)

Cytometry with sorting & analyzing capabilities

## Humanized Mouse Core

**Directors:** Michael Brehm & Dale Greiner

**Phone:** 508-856-3130

[michael.brehm@umassmed.edu](mailto:michael.brehm@umassmed.edu)

[dale.greiner@umassmed.edu](mailto:dale.greiner@umassmed.edu)

Immunodeficient mice that can be engrafted with human cells/tissues for analysis of function

## Image Processing & Analysis Core (iPAC)

**Co-Directors:** Salman Shazeeb & Manoj Saranathan

**Phone:** 508-856-4255

[manojkumar.saranathan@umassmed.edu](mailto:manojkumar.saranathan@umassmed.edu)

Provides image analysis tools & expertise for pre-clinical & clinical imaging studies of diseases

## Investigational Drug Services

**Director:** Brendan Sendrowski

**Phone:** 774-443-8667

[IDS@umassmemorial.org](mailto:IDS@umassmemorial.org)

High quality pharmaceutical services and supports research activities for all clinical trials at UMass Chan and UMass Memorial

## Leukocyte Facility

**Director:** Dr. Jeremy Luban

**Phone:** 508-856-6899

[jeremy.luban@umassmed.edu](mailto:jeremy.luban@umassmed.edu)

The core provides leukoreduction filters, obtained from New York Biologics, that have been used to remove leukocytes from whole units of blood obtained from normal blood donors

## Mass Spectrometry Facility

**Director:** Vikas Kumar

**Phone:** 508-856-8917

[vikas.kumar5@umassmed.edu](mailto:vikas.kumar5@umassmed.edu)

State of the art proteomics, metabolomics, and mass spectrometry imaging analyses

## Media Prep Core Facility

**Director:** Rachel Lamson

**Phone:** 508-856-1745

[rachel.lamson@umassmed.edu](mailto:rachel.lamson@umassmed.edu)

Custom media and laboratory buffers

## Metabolomics Core

**Director:** Caroline Lewis Chidley

**Phone:** 508-856-2604

[metabolomics@umassmed.edu](mailto:metabolomics@umassmed.edu)

[Caroline.Chidley@umassmed.edu](mailto:Caroline.Chidley@umassmed.edu)

State-of-the-art instrumentation and expertise focusing on metabolomics and lipidomics; mass spectrometry methods and experimental

design optimized for small molecules, and include targeted and untargeted polar metabolomics, lipidomics and stable-isotope tracing

## Metabolic Disease Research Center

**Director:** Dr. Jason Kim

**Phone:** 508-856-6840

[jason.kim@umassmed.edu](mailto:jason.kim@umassmed.edu)

Offers an array of sophisticated and standardized experiments for the purpose of investigating transgenic mouse models of diabetes, obesity, and metabolic liver disease.

## Molecular Biology Core Lab

**Director:** Ellen Kittler

**Phone:** 508-856-6137

[ellen.kittler@umassmed.edu](mailto:ellen.kittler@umassmed.edu)

DNA fragment analysis, Genotyping & SPR services; host to the Oligonucleotide program providing discounted oligos

## Morphology Core

**Director:** Yu Liu

**Phone:** 508-856-5639

[yu.liu@umassmed.edu](mailto:yu.liu@umassmed.edu)

Histology services including routine histologic preparations, special stains, immunohistochemistry, and frozen sections

## Mouse Behavioral Core

**Director:** David Weaver

**Phone:** 508-856-2495

[david.weaver@umassmed.edu](mailto:david.weaver@umassmed.edu)

Facilitate neuroscientific research by providing facilities, equipment, and training to characterize behavior in wild-type and genetically modified mice

## NE Center for Stroke Research

**Director:** Matt Gounis

**Phone:** 508-856-1884

[matthew.gounis@umassmed.edu](mailto:matthew.gounis@umassmed.edu)

Neuroradiology facility that offers the latest technology in image guided intervention

## NMR Consortium

**Director:** Francesca Massi

**Phone:** 508-856-4501

[francesca.massi@umassmed.edu](mailto:francesca.massi@umassmed.edu)

The NMR Core provides access to instrumentations to study the structure, dynamics, interaction, and organization of molecules