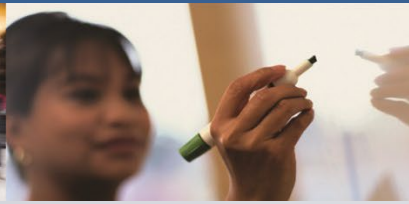


POPULATION AND QUANTITATIVE HEALTH SCIENCES



SPECIAL SEMINAR

Reducing Chronic Disease Disparities in Women's Health: Moving Science to Real World Impact

Monday, March 27, 2023

12:00 – 1:00 PM



Presented by:
Dr. Debra Haire-Joshu
Joyce and Chauncy Buchheit
Professorship in Public Health
Brown School
Washington University
in St. Louis

Debra Haire-Joshu, PhD, MS, MSN, RN, holds the Joyce and Chauncy Buchheit Professorship in Public Health at Washington University in St. Louis with a joint appointment as Professor in the School of Medicine. Dr. Haire-Joshu is a behavioral scientist and public health researcher who develops and tests population-wide interventions to prevent obesity, diabetes, and cardiovascular disease among women and children from under-resourced communities. She is the Principal Investigator of the NIH-funded Center for Diabetes Translation Research which supports over 90 faculty conducting diabetes research with the aim of achieving health equity, and currently leads three NIH-funded trials targeting the prevention of excess weight gain among women of childbearing age and their young children. She has served on several National Academy of Medicine (and Institute of Medicine) committees on early childhood obesity and is a current member of the National Diabetes and Digestive and Kidney Diseases Advisory Council. She has published extensively in peer reviewed literature, authored an award-winning textbook on diabetes management across the lifespan, and has been an active contributor to health policy at national and state levels.

